

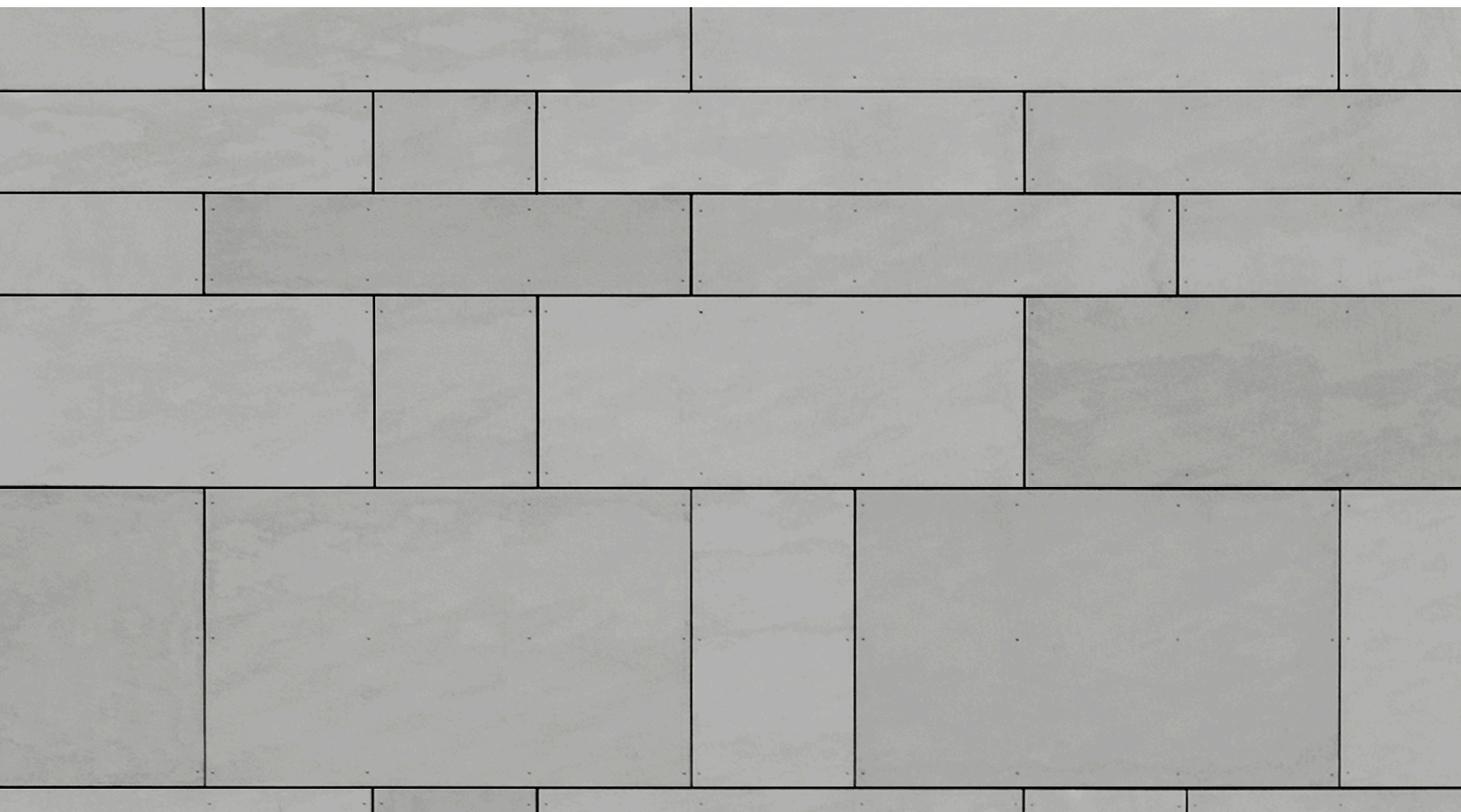



Arch.: Delugan Meissl Associated Architects, Vienna, Austria



# EQUITONE

Fibre cement facade materials





# EQUITONE fiber cement facade materials

When Ludwig Hatschek invented fiber cement in the late 19th century, he combined the basic elements of the earth: mineral materials, water, air and fire (heat) in a simple filtration process. He named the resulting material “Eternit”, hinting at the superior durability of this new material. Our mother company, Etex, has been manufacturing fiber cement materials since 1905. The most prestigious incarnation in this proud heritage of unique materials is the EQUITONE® facade material range. The Hatschek production process makes each EQUITONE facade panel unique with an individual fiber cement texture. Most EQUITONE facade materials are through-colored with a raw, unfinished character.

In the 1950s leading architects such as Walter Gropius pioneered the use of coated fiber cement panels using the ventilated facade (rainscreen) system. Designer Willy Guhl created the famous “loop chair” from 1 piece of fiber cement in 1954. This design still bears witness to the core qualities of the fiber cement base material: thin, light, durable and beautiful. In 1987, Herzog & De Meuron designed the Ricola storage building in Laufen using uncoated fiber cement panels. The resulting shutter facade, which is a reference to the cardboard boxes inside, inspired our company to start the industrial development of raw, untreated fiber cement materials.

Today EQUITONE has a full range of through-colored, untreated fiber cement materials. Leading architects of our time are exploring and transforming the EQUITONE material in remarkable facade designs.

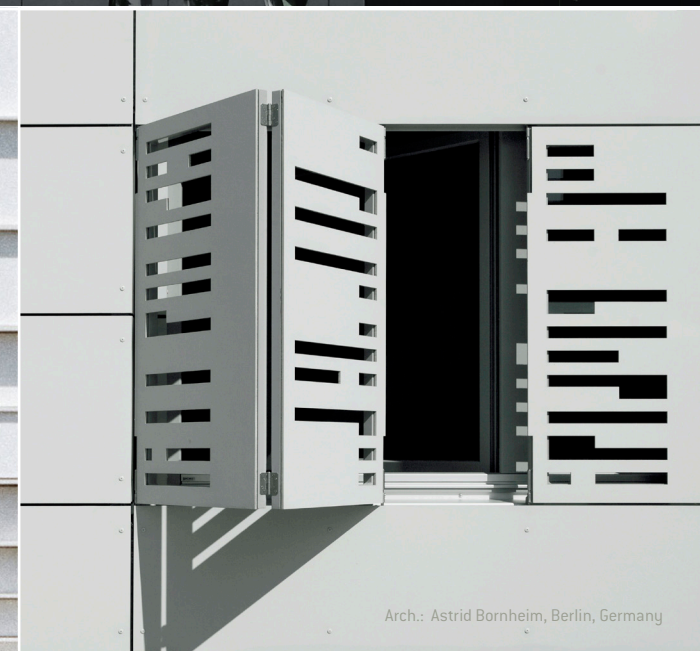
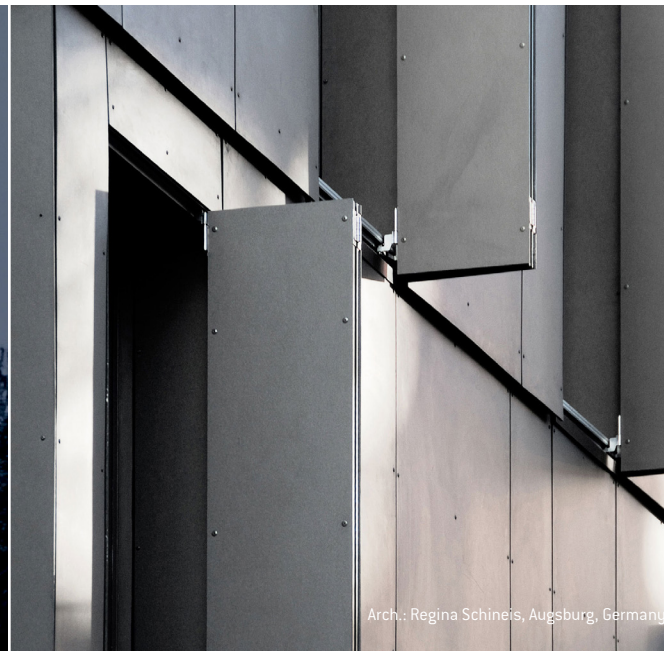




# Design potential

EQUITONE facade materials offer unparalleled design flexibility. The fiber cement material is through-colored, which means the surface displays the inner texture and color of the core fiber cement material. No matter what facade design options you explore, the through-colored materials can be transformed into crisp, monolithic facade details.

EQUITONE facade materials come in a maximum panel size of 4' x 10' (1.25 x 3m) and can be transformed into any size or shape using standard tools in the workshop or on site. The material can be perforated using waterjet or CNC machines, large or very small cuts can be made, it can even be embossed and printed. Some designers have used it for interiors or furniture. The through-colored material allows you to achieve flawless intricate details.





# EQUITONE [linea]

**CLERKENWELL  
DESIGN**

SPONSORED BY

**COW Presents**

Studio Weave in conjunction with EQUITONE  
Hard cement facade materials

**EQUITONE**

20 May  
21 May  
22 May  
23 May

# EQUITONE [ linea ]

**DESIGN**

Unique, 3D shaped, through-colored facade material that plays with light and shadow.

**FINISH**

The linear surface highlights the raw, inner texture of the core fiber cement material.

**EXPRESSION**

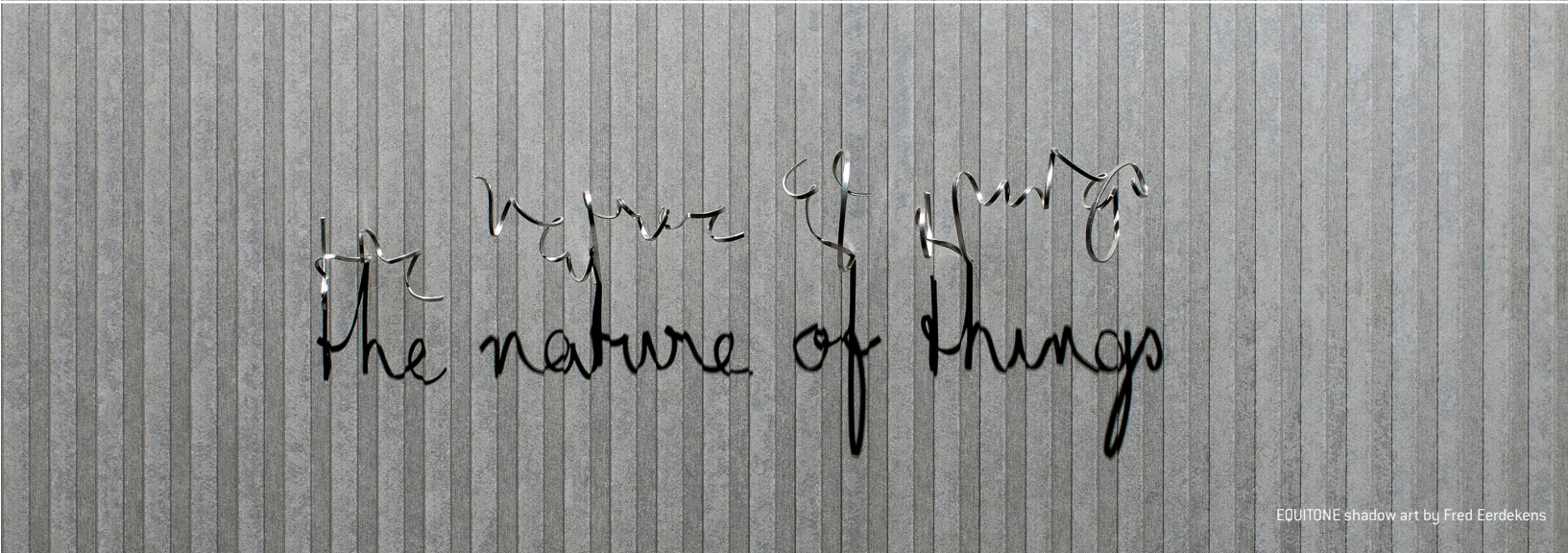
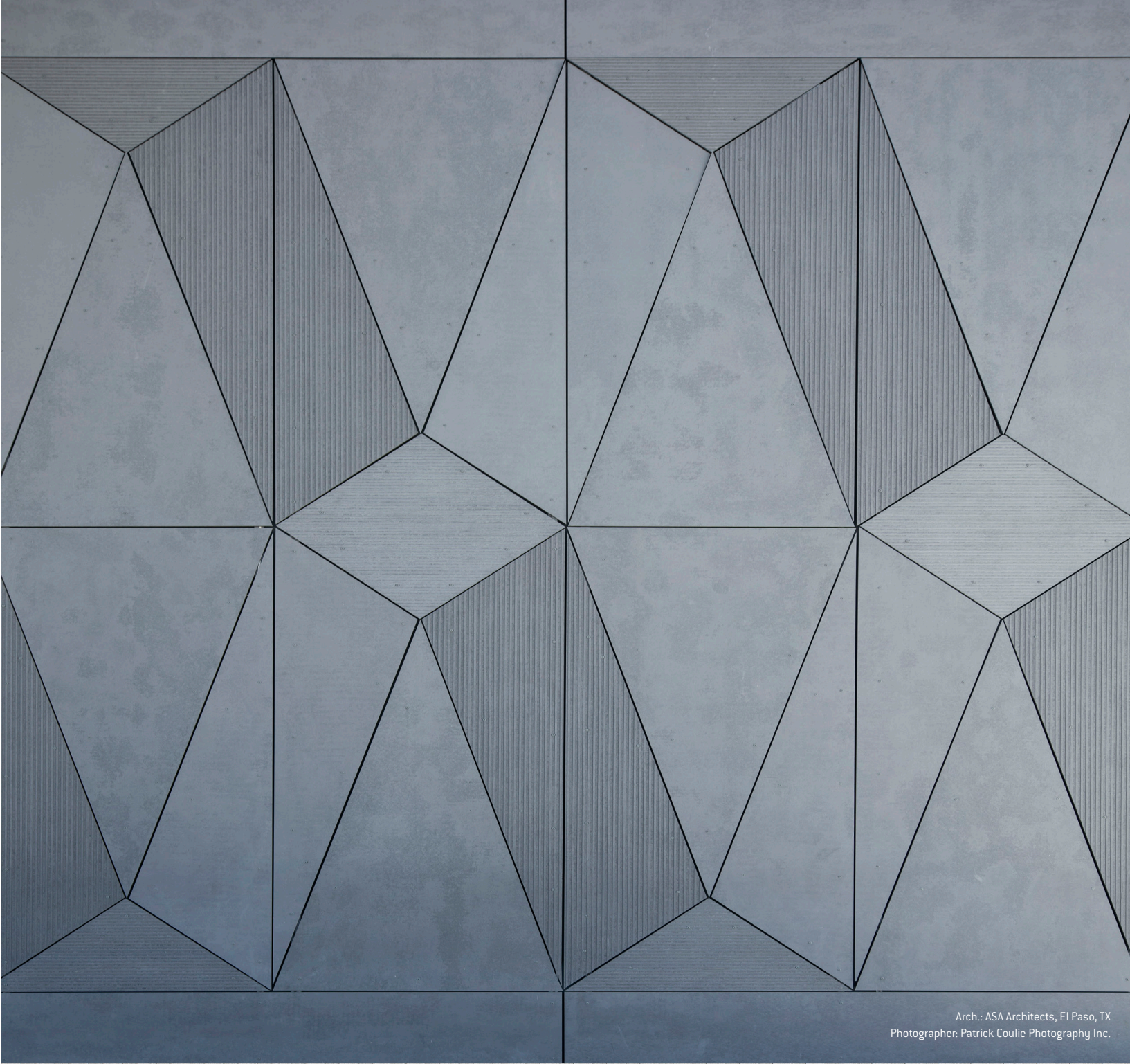
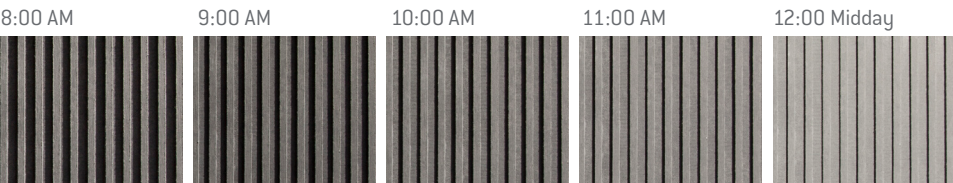
Every moment of the day, the changing angle of the daylight gives the facade materials a different aspect.

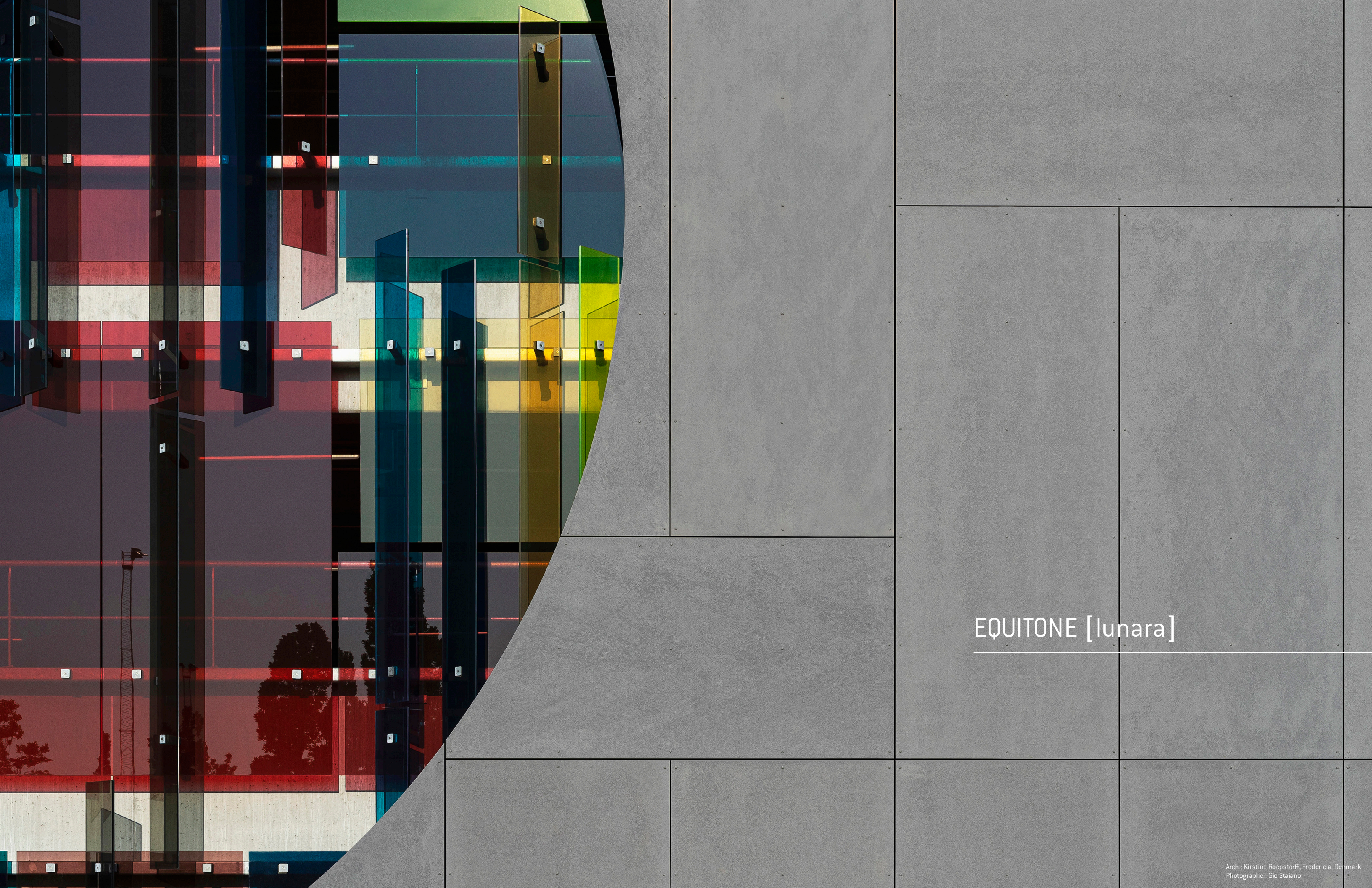
Thickness	Sheet Size	Nominal Weight
10mm	4' x 8' ( 1250 x 2500mm)	3.4lb/ft <sup>2</sup>
	4' x 10' ( 1250 x 3100mm)	

\*Naturally occurring white flecks may be visible which adds to the aesthetics of the material



**SHADOW EFFECT:**





## EQUITONE [lunara]

# EQUITONE [lunara]

**ESSENCE**

A through-colored panel with a surface resembling a lunar landscape.

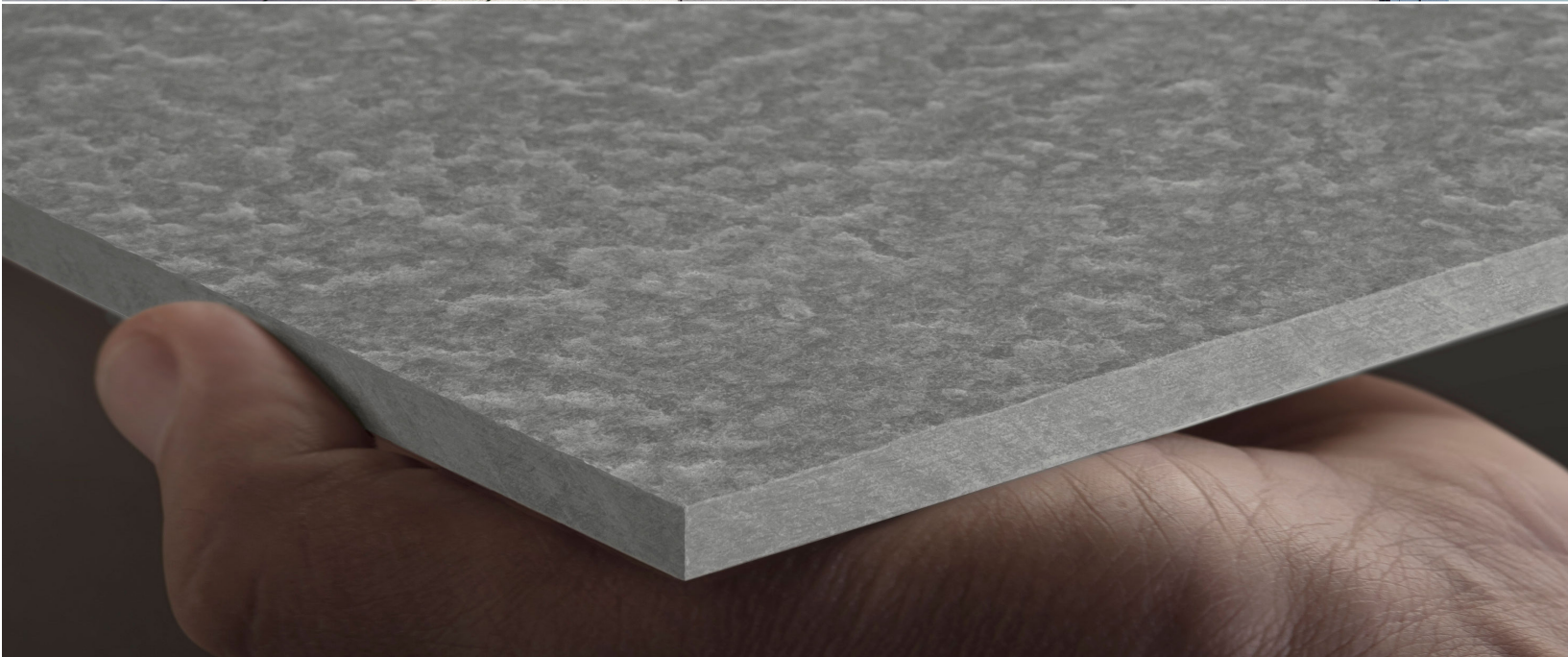
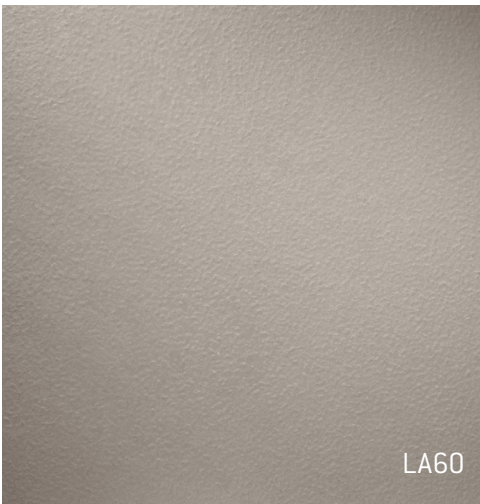
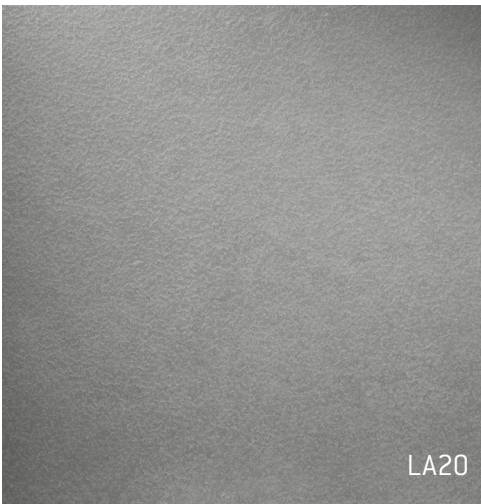
**CHARACTERISTICS**

The special production process makes each panel unique in color, texture, and surface.

**EXPRESSION**

The refined, uncoated surface looks as if it was created naturally, and the texture is without a repeating pattern.

Thickness	Sheet Size	Nominal Weight
10mm	4' x 8' ( 1220 x 2500mm)	3.6lb/ft <sup>2</sup>
	4' x 10' ( 1220 x 3050mm)	





EQUITONE [tectiva]

# EQUITONE [tectiva]

## AUTHENTICITY

Original, through-colored material with highly expressive fiber cement structure.

## INDIVIDUALITY

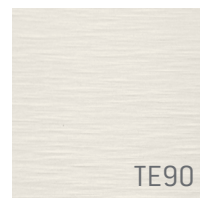
The production process makes each panel unique in color, texture and surface.

## TACTILITY

Rough, unpolished fiber cement surface with delicate, linen touch.

Thickness	Sheet Size	Nominal Weight
8mm	4' x 8' (1250 x 2500mm)	3.05lb/ft <sup>2</sup>
	4' x 10' (1250 x 3100mm)	

\*Naturally occurring white flecks may be visible which adds to the aesthetics of the material



TE90



TE00



TE10



TE60



TE30



TE40



TE15



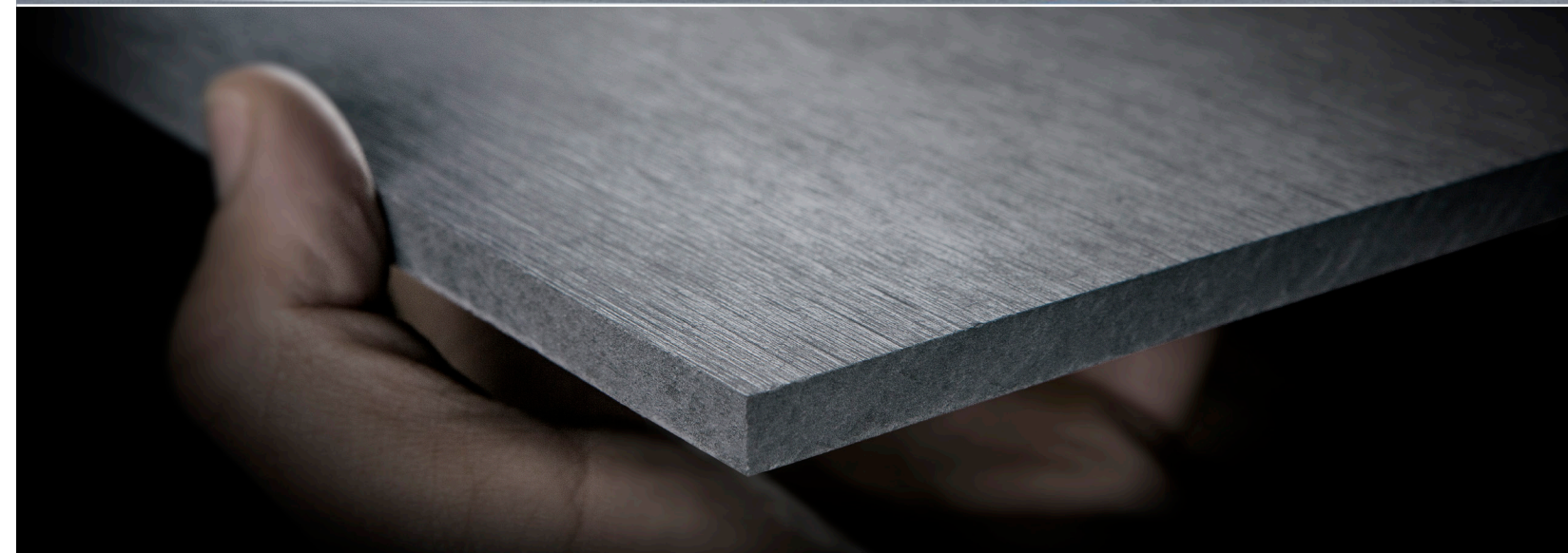
TE20



TE85



Arch.: ARC Cambridge, Providence, RI  
Photographer: Studio John Horner





# EQUITONE [natura]

---

# EQUITONE [natura]

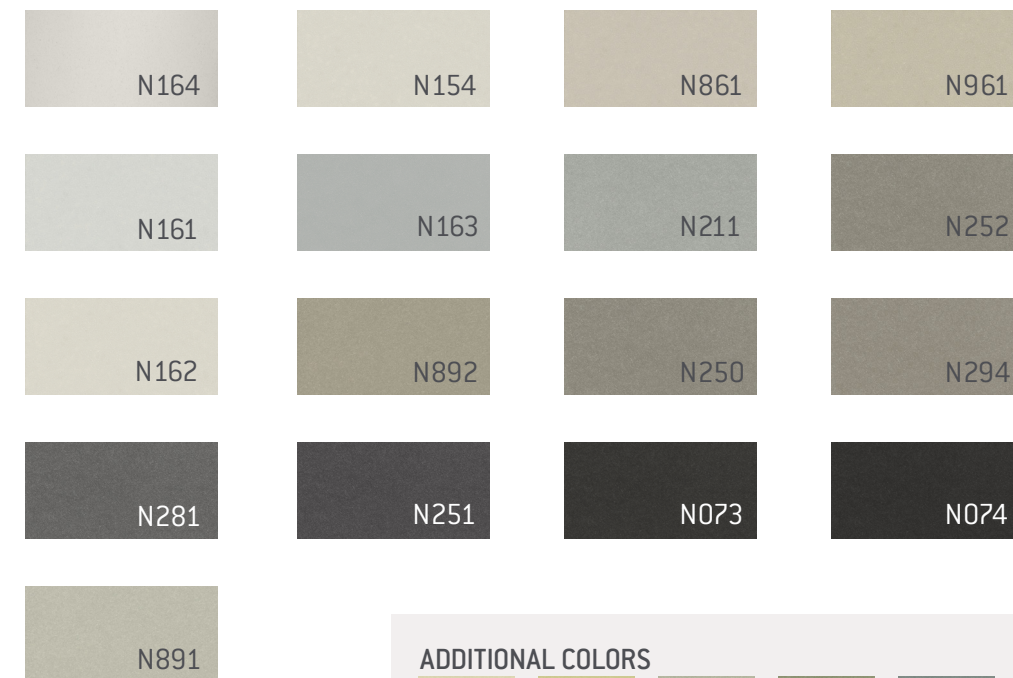
## SOPHISTICATION

Natural material with clearly visible yet subtle fiber cement matrix, in a range of through-colors.

## SOFT TOUCH

Matte, smooth surface finish.

Thickness	Sheet Size	Nominal Weight
8mm	4' x 8' (1250 x 2500mm)	3.15lb/ft <sup>2</sup>
	4' x 10' (1250 x 3100mm)	
12mm	4' x 8' (1250 x 2500mm)	4.67lb/ft <sup>2</sup>
	4' x 10' (1250 x 3100mm)	



### ADDITIONAL COLORS



# EQUITONE [pictura]

## COLOR

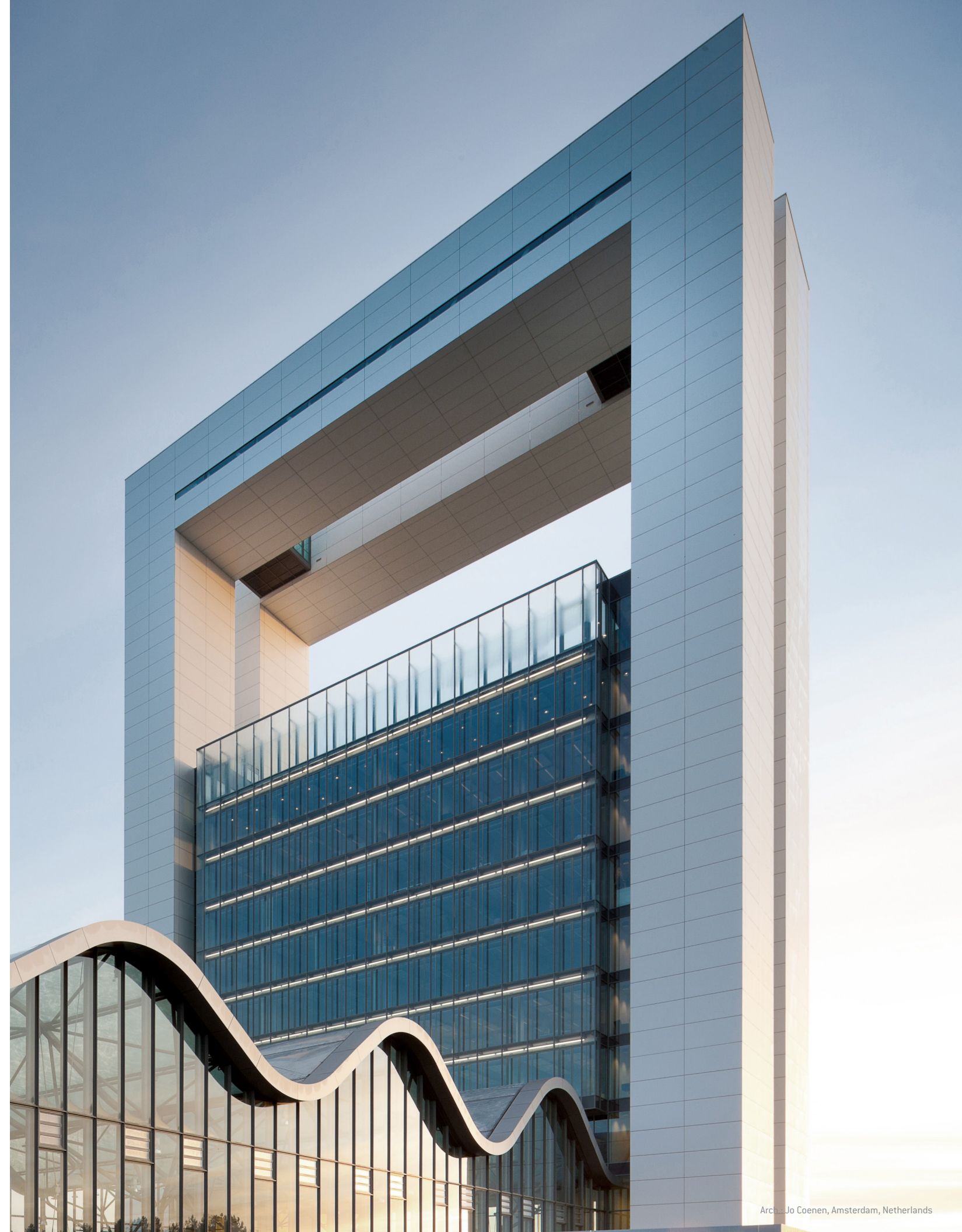
EQUITONE [pictura] offers a selection of contemporary color coatings.

## MATTE SURFACE

Smooth and ultra-matte finish for high class architectural look.

Thickness	Sheet Size	Nominal Weight
8mm	4' x 8' (1250 x 2500mm)	3.15lb/ft <sup>2</sup>
	4' x 10' (1250 x 3100mm)	
12mm	4' x 8' (1250 x 2500mm)	4.67lb/ft <sup>2</sup>
	4' x 10' (1250 x 3100mm)	

 PW141	 PG243	 PG241	 PA041
 PW841	 PG843	 PG844	 PA944
 PG542	 PG546	 PG444	 PG342
 PG642	 PG545	 PG443	 PG341
 PG641	 PG544	 PG442	 PG742





# EQUITONE

Fibre cement facade materials



Arch: Arkitekterne Bjørk & Maigård ApS, Aalborg, Denmark

[equitone.com](https://equitone.com)

Contact us at [info.usa@equitone.com](mailto:info.usa@equitone.com)

US reference list: [pinterest.com/equitonefacade/usa-reference-list/](https://pinterest.com/equitonefacade/usa-reference-list/)

