

EQUITONE [linea]

 EQUITONE

Introduction to EQUITONE [linea]

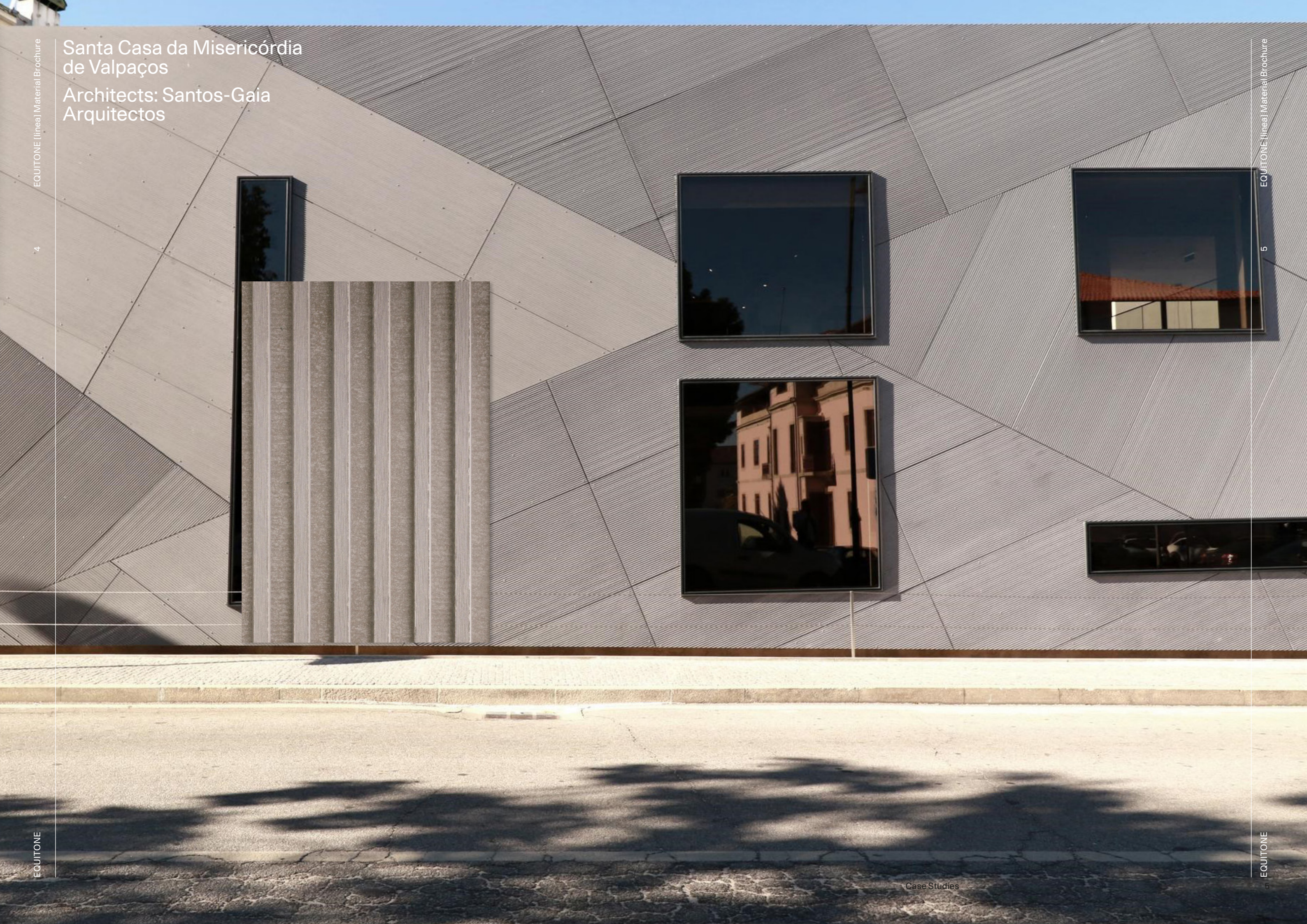
EQUITONE [linea]'s unique 3D design plays with natural light to produce compelling visual effects. Created in collaboration with architects, the material's ever-changing appearance draws the eye and holds the gaze. Inspired by the human hand, its proportions are familiar and inviting to the touch.

Come closer, and the through-coloured material reveals its full complexity and integrity. Within the geometric structure, fibres create a delicate texture, bringing natural detail and subtlety to this material's bold beauty.

Since its release in 2014, EQUITONE [linea]'s innovative and original design has influenced others. However, it is the first material of its kind to be produced entirely by one manufacturer through an innovative patented process, guaranteeing quality and a refined natural-looking mineral finish.



Santa Casa da Misericórdia
de Valpaços
Architects: Santos-Gaia
Arquitectos



Santa Casa da Misericórdia



Project:
Santa Casa da Misericórdia

Location:
Valpaços,
Portugal

Architects:
Santos-Gaia
Arquitectos

Material type:
EQUITONE
[linea] LT 20

Photographer:
Plot Twist





Project:
Centro de Salud
de A Laracha

Location:
A Coruña, Spain

Architects:
Ezcurra e
Ouzande
arquitectura

Material:
EQUITONE
[linea] LT 20

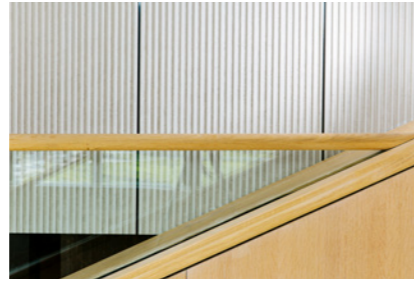
Photographer:
Plot Twist



Centro de Salud de A Laracha



Budapest National Dance Theater



Project:
Budapest
National Dance
Theater

Location:
Budapest,
Hungary

Architects:
ZDA

Material:
EQUITONE
[linea] LT 60

Photographer:
Bálint Hirling





Project:
Chambre de
Métiers et
l'Artisanat

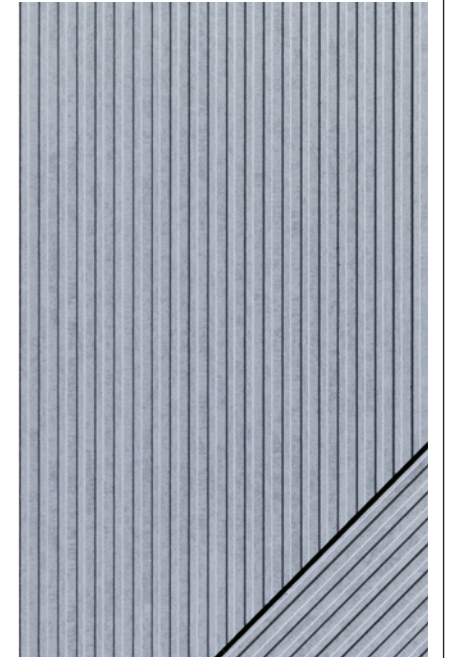
Location:
Vannes, France

Architects:
MAGMA

Material:
EQUITONE
[linea] LT 20

Photographer:
Pascal Leopold

Chambre de Métiers et l'Artisanat



Outside Cahir Castle
Ireland
Architects:
Deaton Lysaght Architects





ARA Architecture

Project:
Agence ARA
Architecture
studio

Location:
Rouen, France

Architects:
ARA Architecture

Material:
EQUITONE
[linea] LT 20

Photographer:
Studio Weave
London

“Our façade is inspired
by l’Outrenoir from the
painter Pierre Soulages”

Since our first contact with the sample put on the table, we have immediately imagined our practice with this material: we changed all the façade with it.

With EQUITONE [linea] we have realized a concrete marquetry which reveal the ARA's style.

Our practice draws its creative energy in Art, following a refine expression, efficient.

The graphic play that comes from the design of symmetric patterns represents an open book, dramatic day and night.

The narrative power of the relief drawn by EQUITONE [linea] is limitless.

This new envelope has radically structured and redefined the shape of our building.

Its lines catch the eyes of the passer-by: many of them slow down and take pictures of our façade. The material arouses a great support and we have used it for the time for the headquarters of Colas (Ile-de-France) ...indoor.

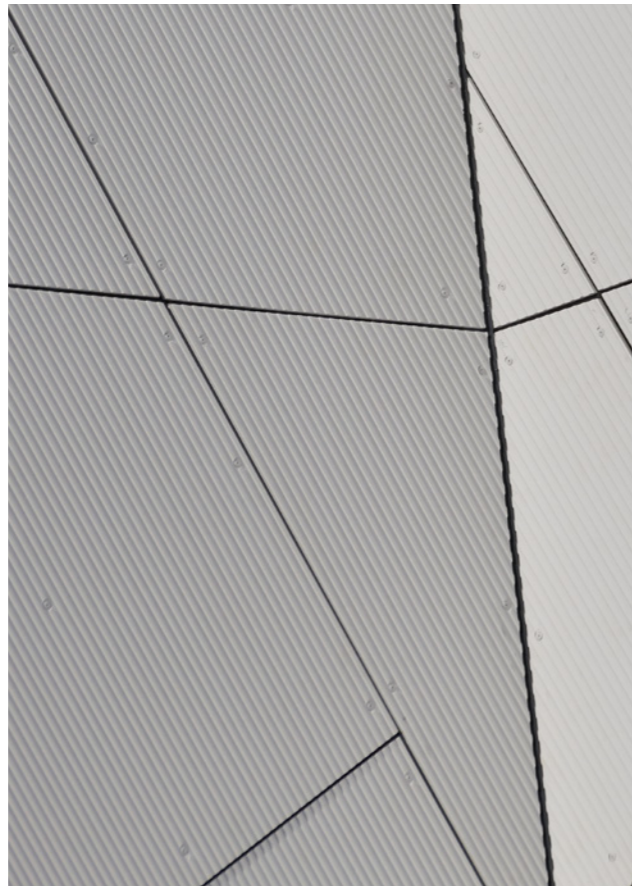
Alone or associated with flat products, EQUITONE [linea] subtly or vigorously signs a façade or underline an indoor detail.



“We chose EQUITONE [linea] for its minerality, its raw and matt aspect.”



Nicolas Guillot



Project:
Espace
BELLEVARDE

Location:
Challes les Eaux,
France

Architects:
Nicolas Guillot

Material:
EQUITONE
[linea] LT 20

Photographer:
Fabrice Ferrer



The grooved design of the material compliments the lines of the Challes les Eaux project perfectly.

The striped pattern creates shadows, bringing the building to life. In addition, the tight grooves brighten the façade with a second layer when you get closer to the façade.



SMD3
Coulounieix-Chamiers,
France

Architects:
Bourgeois Architecte



Material Details

| | |
|-------------|----------------------------------|
| Thickness | 10 mm |
| Panel Sizes | 2500 x 1220 mm 3050 x 1220 mm |
| Weight | 16.8 kg/m ² |

Fire Classification A2-s1,d0

Sound insulating

Resistant to extreme temperatures and frost

Water resistant
(if in compliance with application guideline)

Resistant to many living organisms
(fungi, bacteria, insects, vermin, etc.)

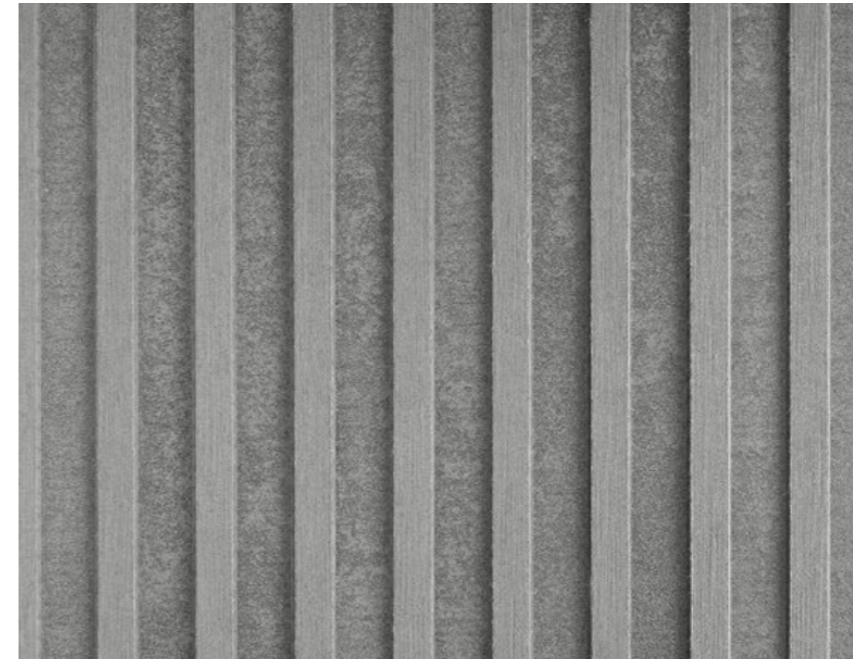
Resistant to many chemicals

Environmentally friendly, no harmful gas
emissions

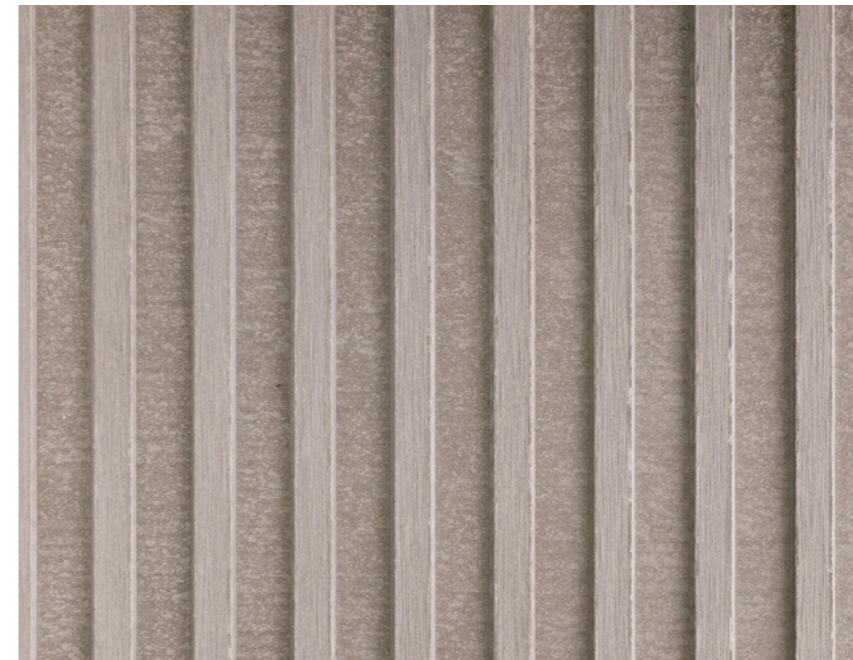
Mineral appearance due to an invisible
water-repellent treatment

Strong, rigid panels

Request your sample today:
[equitone.com/linea](https://www.equitone.com/linea)



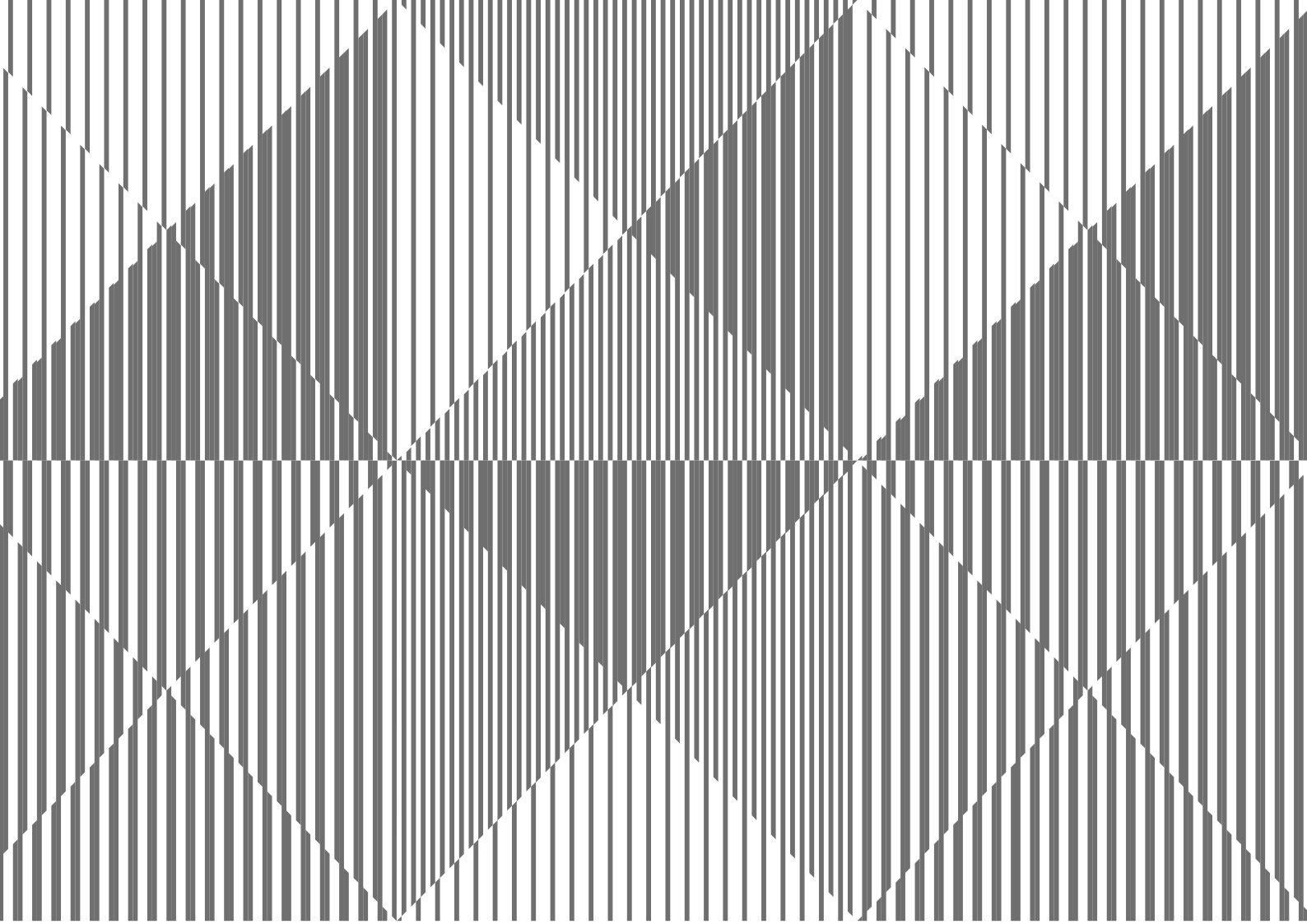
01
EQUITONE
[linea] LT 20



02
EQUITONE
[linea] LT 60



03
EQUITONE
[linea] LT 90



Europanel Overseas NV

Bormstraat 24

2830 Tiselt (Willebroek) - Belgium

info.europanel@etexgroup.com